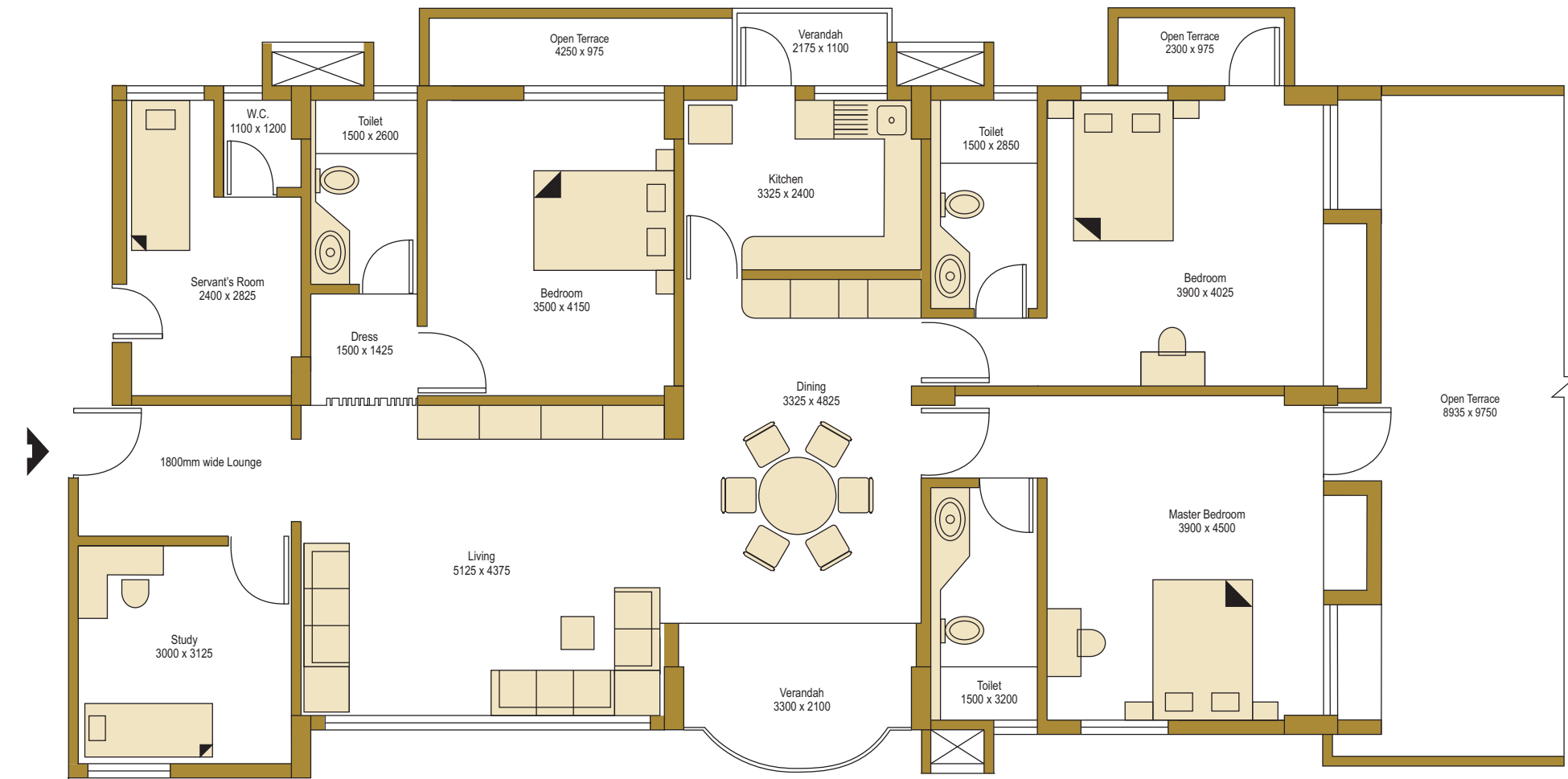
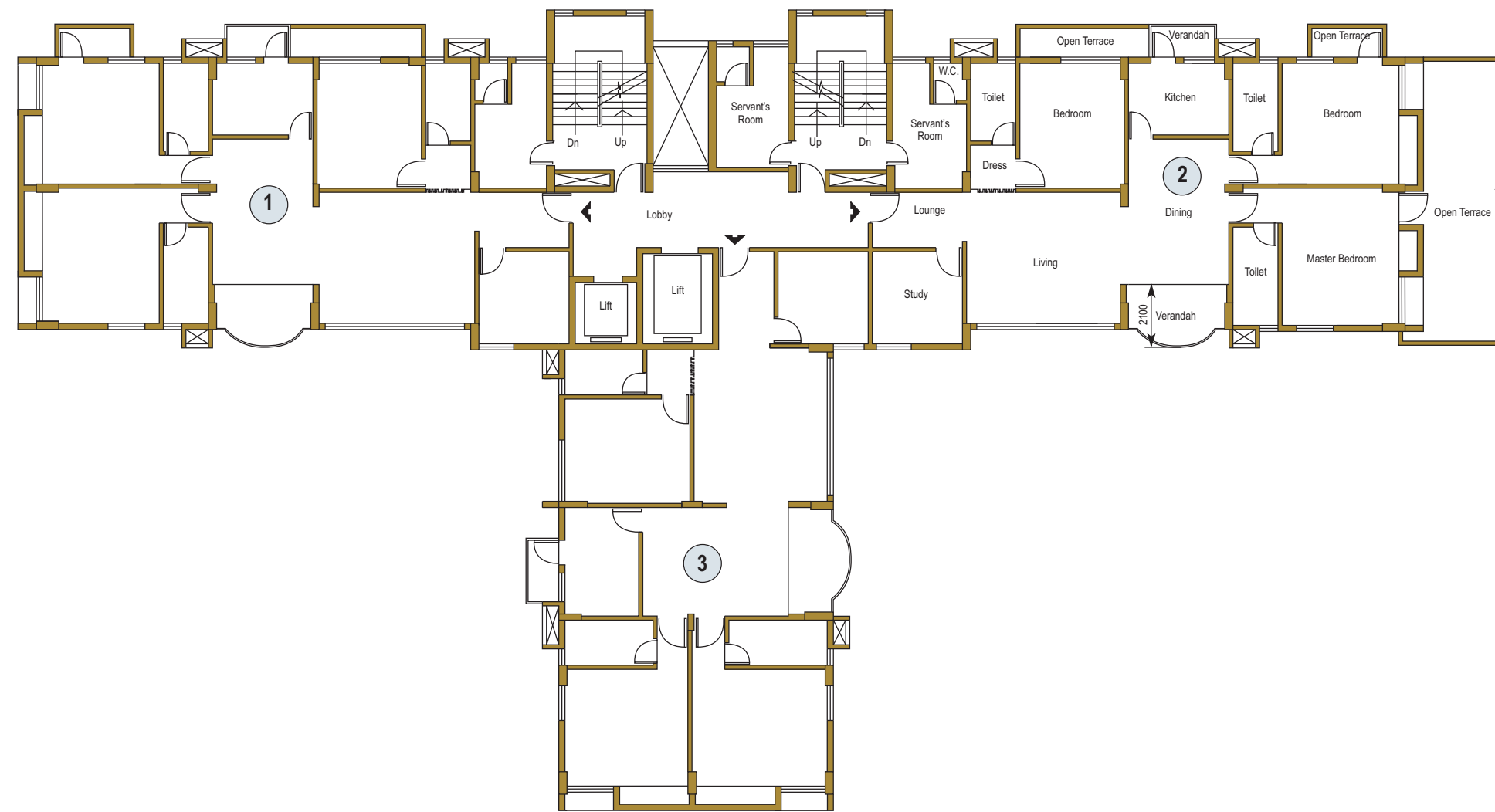


Floor Plan of 1st floor with open terrace
 Area of Terrace of Flat 1 = 7.62 Sq. m. (82 Sq. ft.)
 Area of Terrace of Flat 2 = 97.64 Sq. m. (1051 Sq. ft.)

1st Floor Flat with open terrace



Flooring : Living Dining - Italian Marble.
 Master Bedroom - Wooden Floor.
 Others - Premium Quality Vitrified Tiles.
 Servant's Room - Ceramic Tiles.

Windows : Coloured anodized special aluminium sliding/openable windows with tinted glass.

Doors : Entry door - Multilocking, anti theft steel powder coated door.
 Verandah - Coloured anodized aluminium sliding door with tinted glass.
 Other rooms - Flush door with teak veneer.
 Toilet - FRP door.

Kitchen Counter : Granite with Stainless Steel sink.

Sanitaryware : Kohlar or Roca (white).
 Servant's Toilet - Hindware/Parryware (whit).

CP Fixtures : Jaquar Florentine or equivalent.
 Servant's Toilet - Essco or equivalent.

Dado : Vitrified Tiles
Special Ammnities : a) Geysers at three toilets
 b) Shower cubicle in three toilets.
 c) Split air-conditioner in three bedrooms.