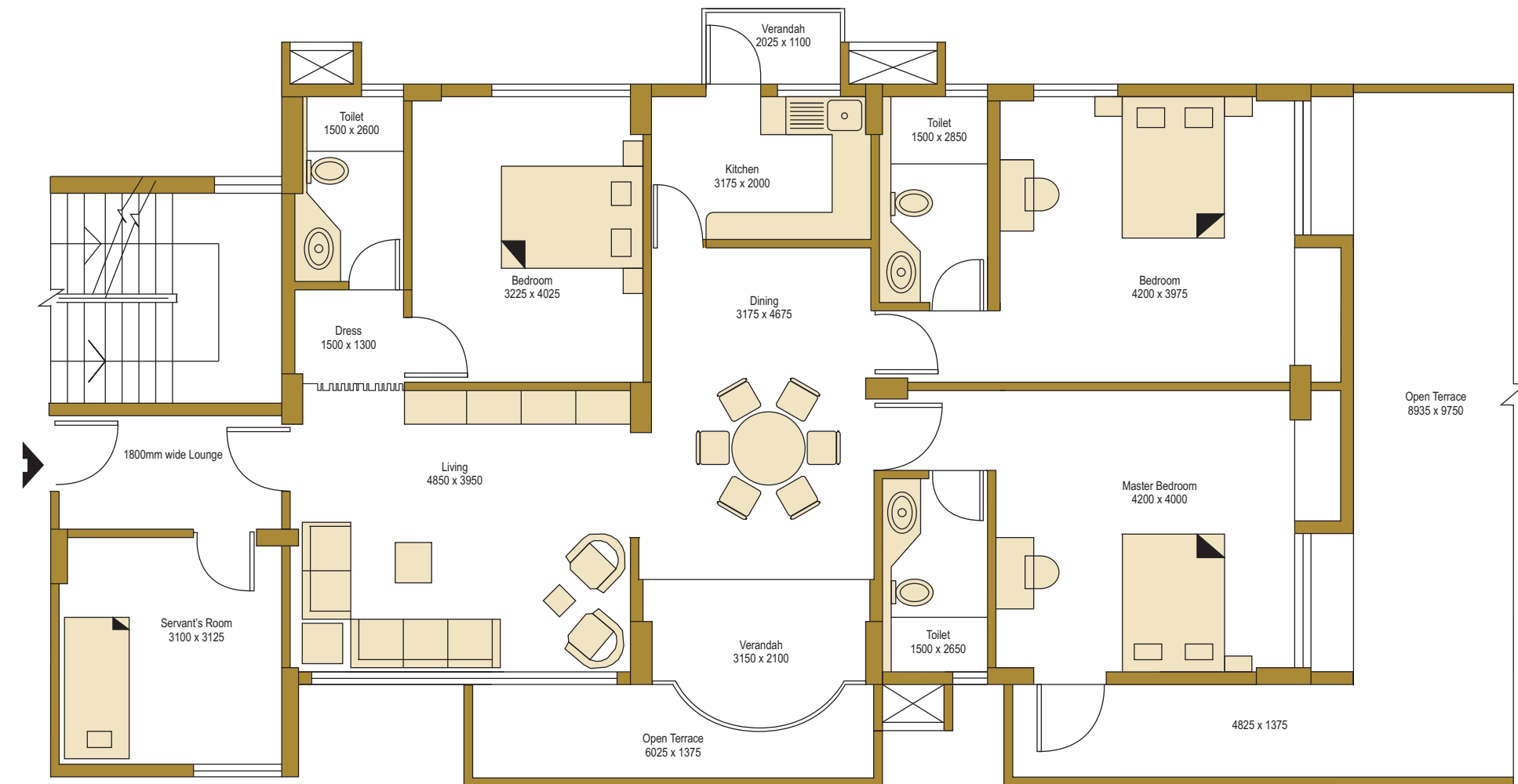
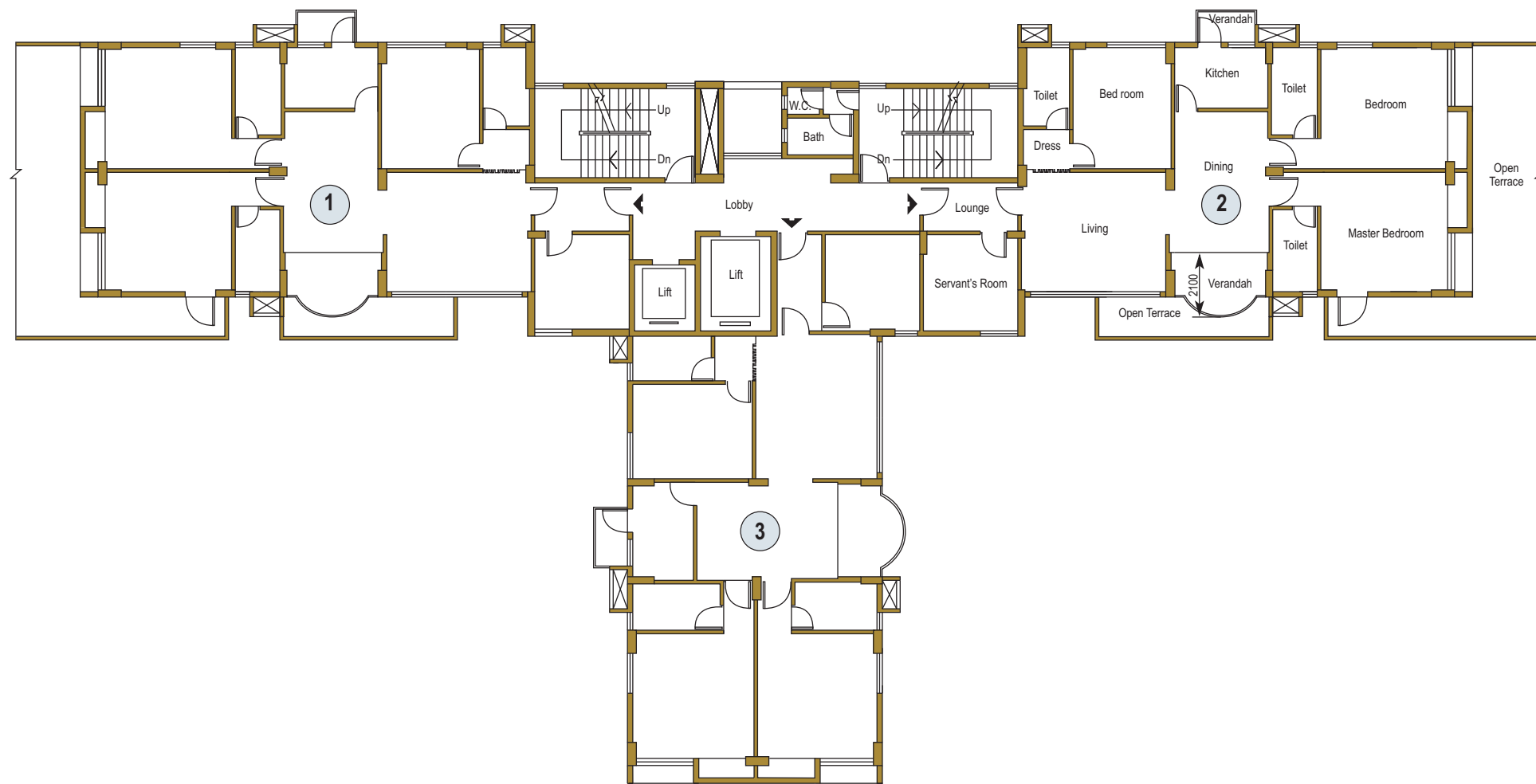


Floor Plan of 1st floor with open terrace
 Area of Terrace at 1st Floor of Flat 1 & 2 = 105.72 Sq. m. (1138 Sq. ft.)

1st Floor Flat with open terrace



Flooring : Living Dining - Italian Marble.
 Master Bedroom - Wooden Floor.
 Others - Premium Quality Vitrified Tiles.
 Servant's Room - Ceramic Tiles.

Windows : Coloured anodized special aluminium sliding/openable windows with tinted glass.

Doors : Entry door - Multilocking, anti theft steel powder coated door.
 Verandah - Coloured anodized aluminium sliding door with tinted glass.
 Other rooms - Flush door with teak veneer.
 Toilet - FRP door.

Kitchen Counter : Granite with Stainless Steel sink.

Sanitaryware : Kohlar or Roca (white).

CP Fixtures : Jaquar Florentine or equivalent

Dado : Vitrified Tiles

Special Ammnities : a) Geyser at three toilets
 b) Shower cubicle in two toilets.
 c) Split air-conditioner in two bedrooms.