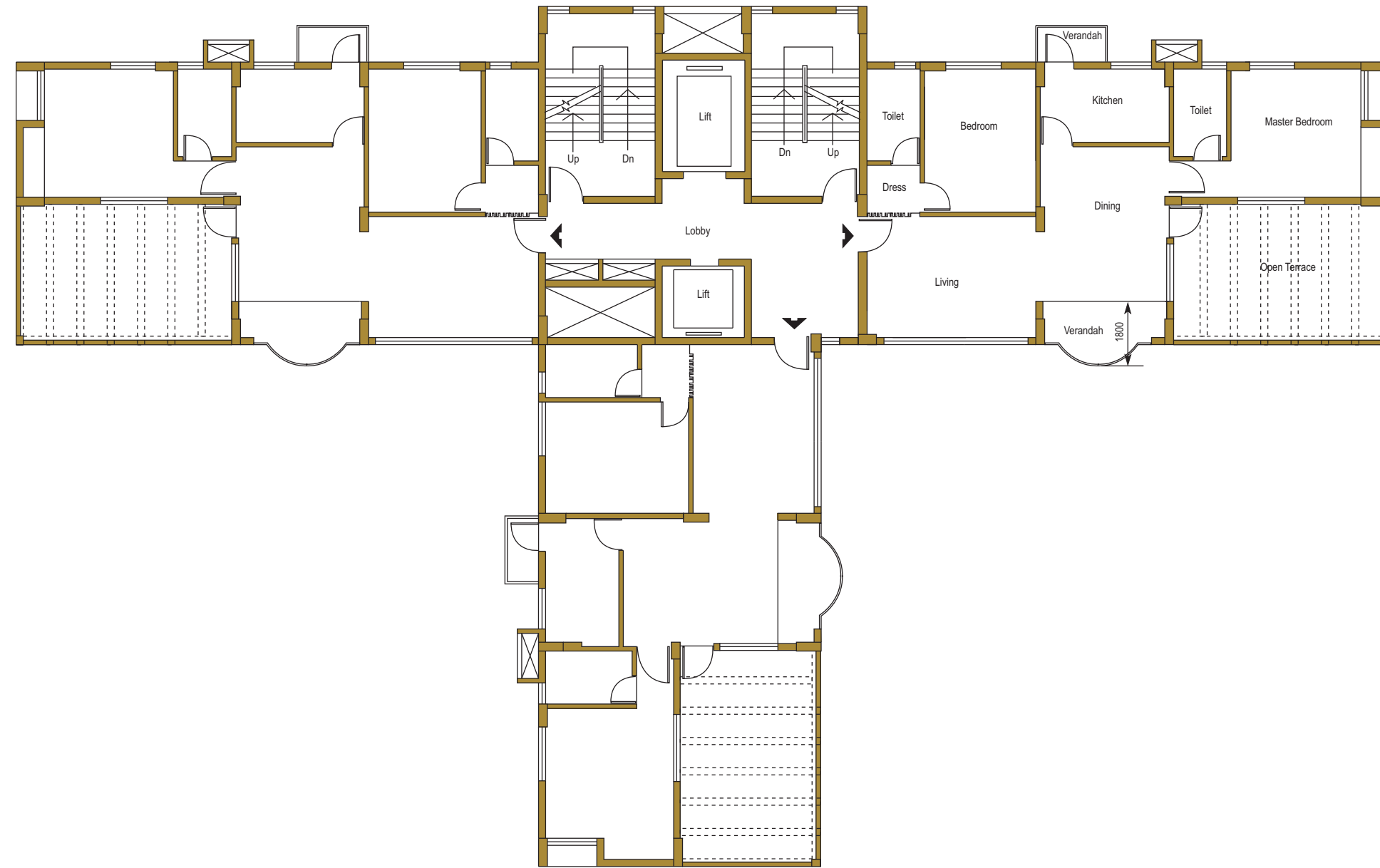
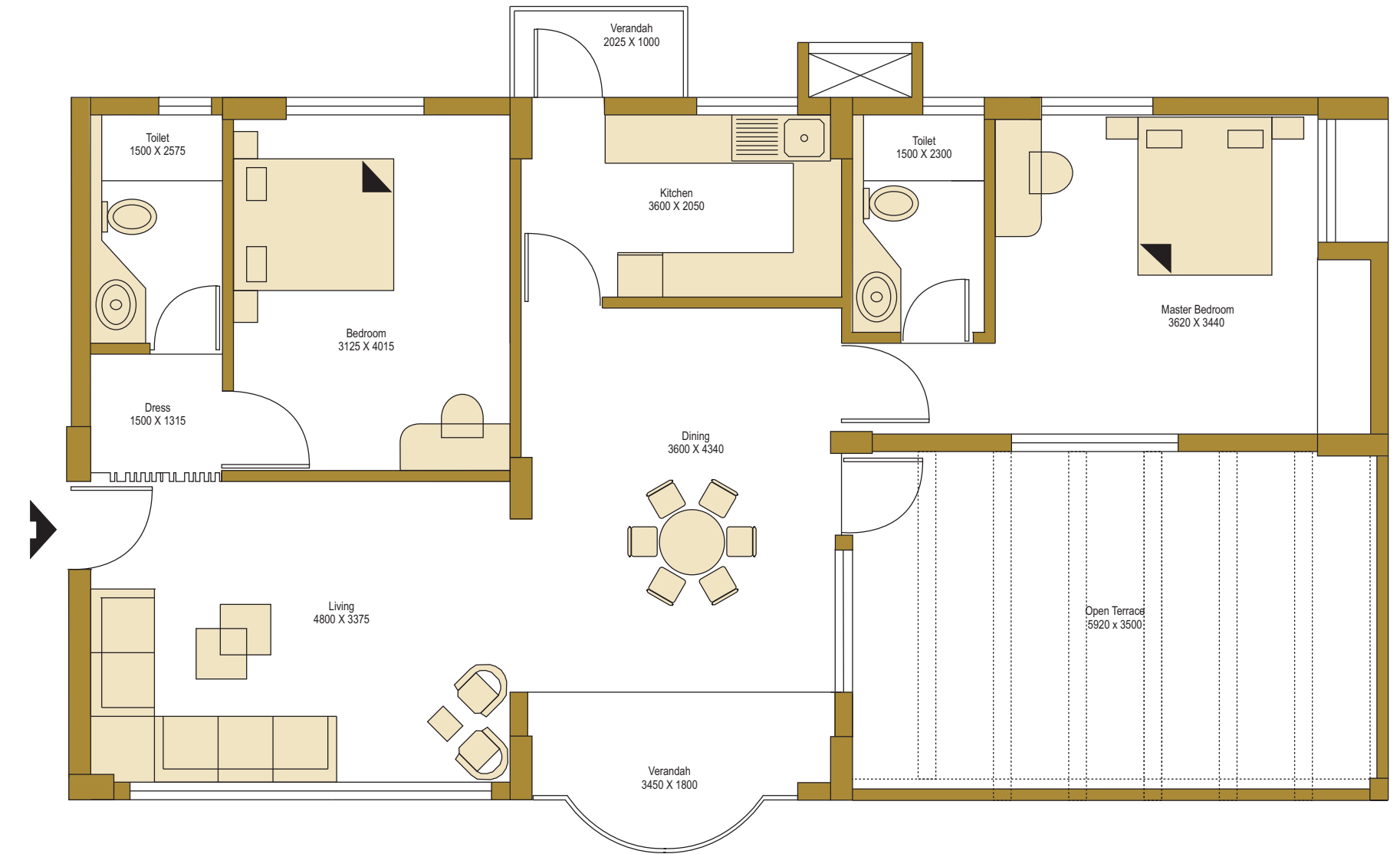


16th Floor Plan

Area Per Flat : 123.62 Sqm. (1331 Sq. ft.)
 Area Per Open Terrace : 21.79 Sqm. (235 Sq. ft.)



16th Floor Flat with open terrace



Flooring : Master Bedroom - Laminated Wooden Floor.
 Others - Premium Quality Vitrified Tiles.

Windows : Coloured anodized special aluminium sliding/openable windows with tinted glass.

Doors : Entry door - Multilocking, anti theft steel powder coated door.
 Verandah - Coloured anodized aluminium sliding door with tinted glass.
 Other rooms - Flush door with teak veneer.
 Toilet & Terrace - FRP door.

Kitchen Counter : Granite with Stainless Steel sink.

Sanitaryware : Kohlar or Roca (white).

CP Fixtures : Jaquar Solo-E or equivalent.

Dado : Ceramic Tiles

Special Ammnities : a) Geyser at two toilets.
 b) Shower Cubicle in one toilet.
 c) Split air-conditioner in Master Bedroom.