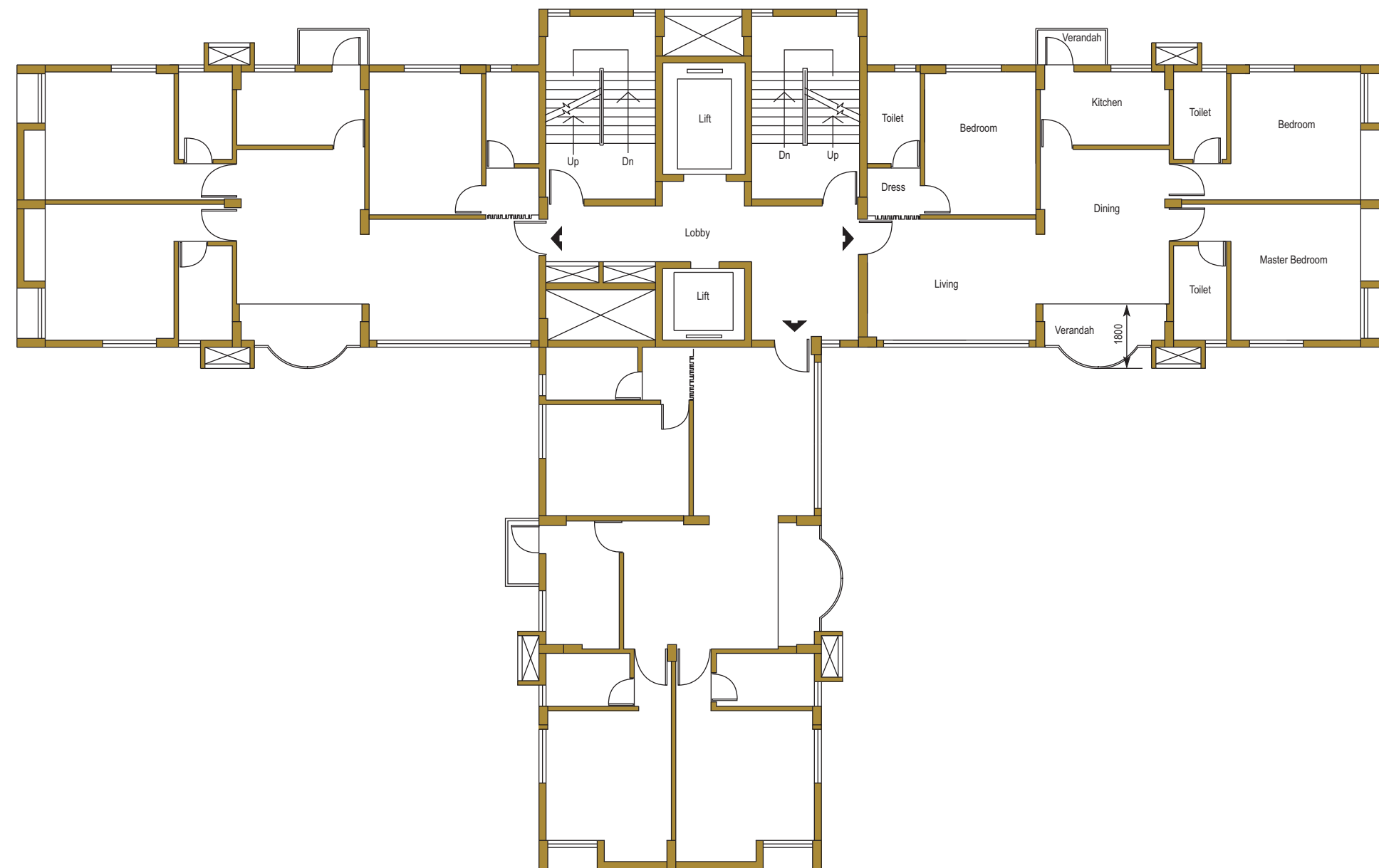
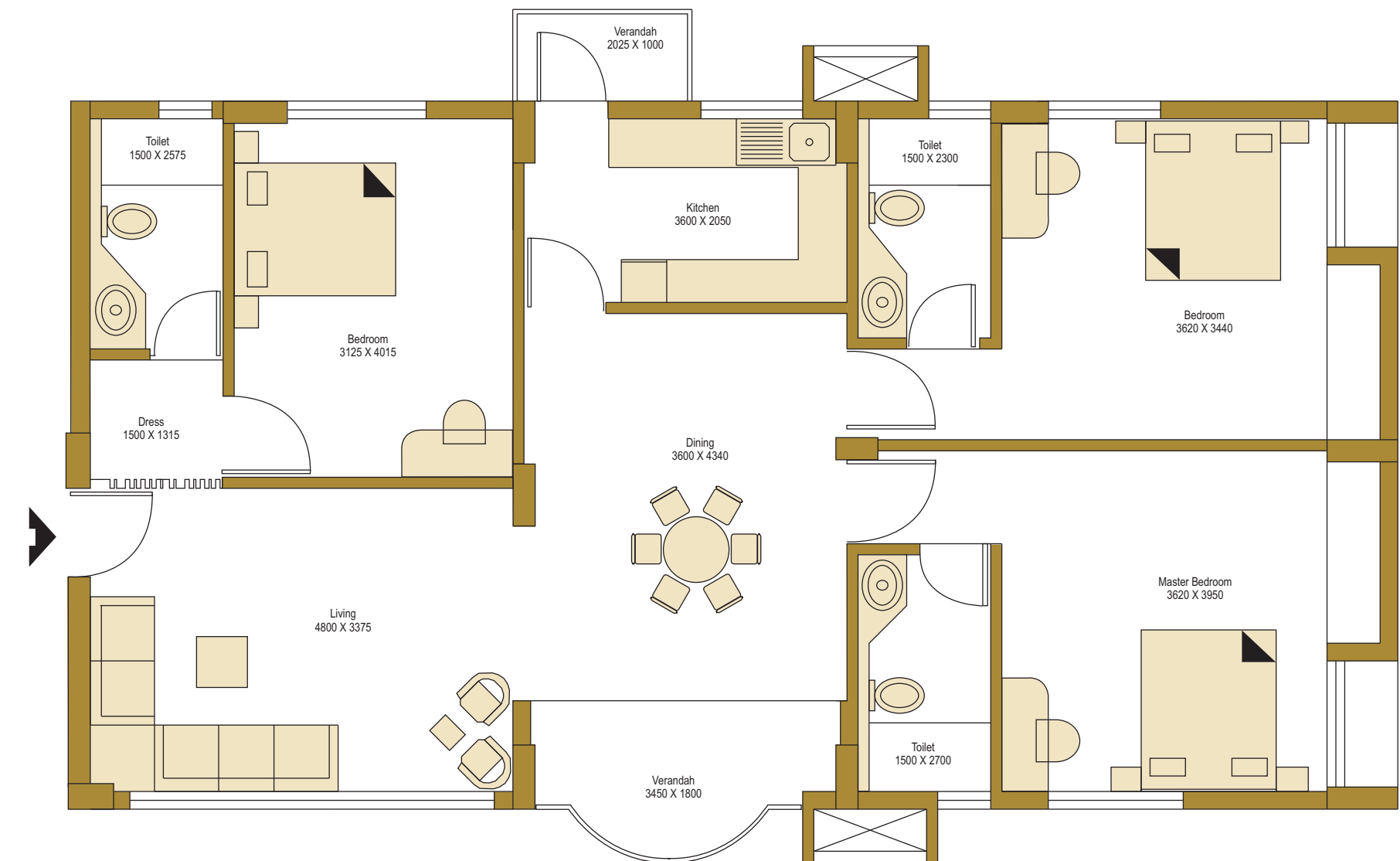


**Typical Floor Plan (2nd to 15th Floor)**

No. of Flats Per Floor : 3  
 No. of Floors Per Building : G + 16  
 Area Per Flat : 145.46 Sq. m. (1566 Sq. ft.)



**Typical Flat (2nd to 15th Floor)**



**Flooring** : Master Bedroom - Laminated Wooden Floor.  
 Others - Premium Quality Vitrified Tiles.

**Windows** : Coloured anodized special aluminium sliding/openable windows with tinted glass.

**Doors** : Entry door - Multilocking, anti theft steel powder coated door.  
 Verandah - Coloured anodized aluminium sliding door with tinted glass.  
 Other rooms - Flush door with teak veneer.  
 Toilet - FRP door.

**Kitchen Counter** : Granite with Stainless Steel sink.

**Sanitaryware** : Kohlar or Roca (white).

**CP Fixtures** : Jaquar Solo-E or equivalent.

**Dado** : Ceramic Tiles

**Special Ammnities** : a) Geyser at two toilets.  
 b) Shower Cubicle in one toilet.  
 c) Split air-conditioner in Master Bedroom.