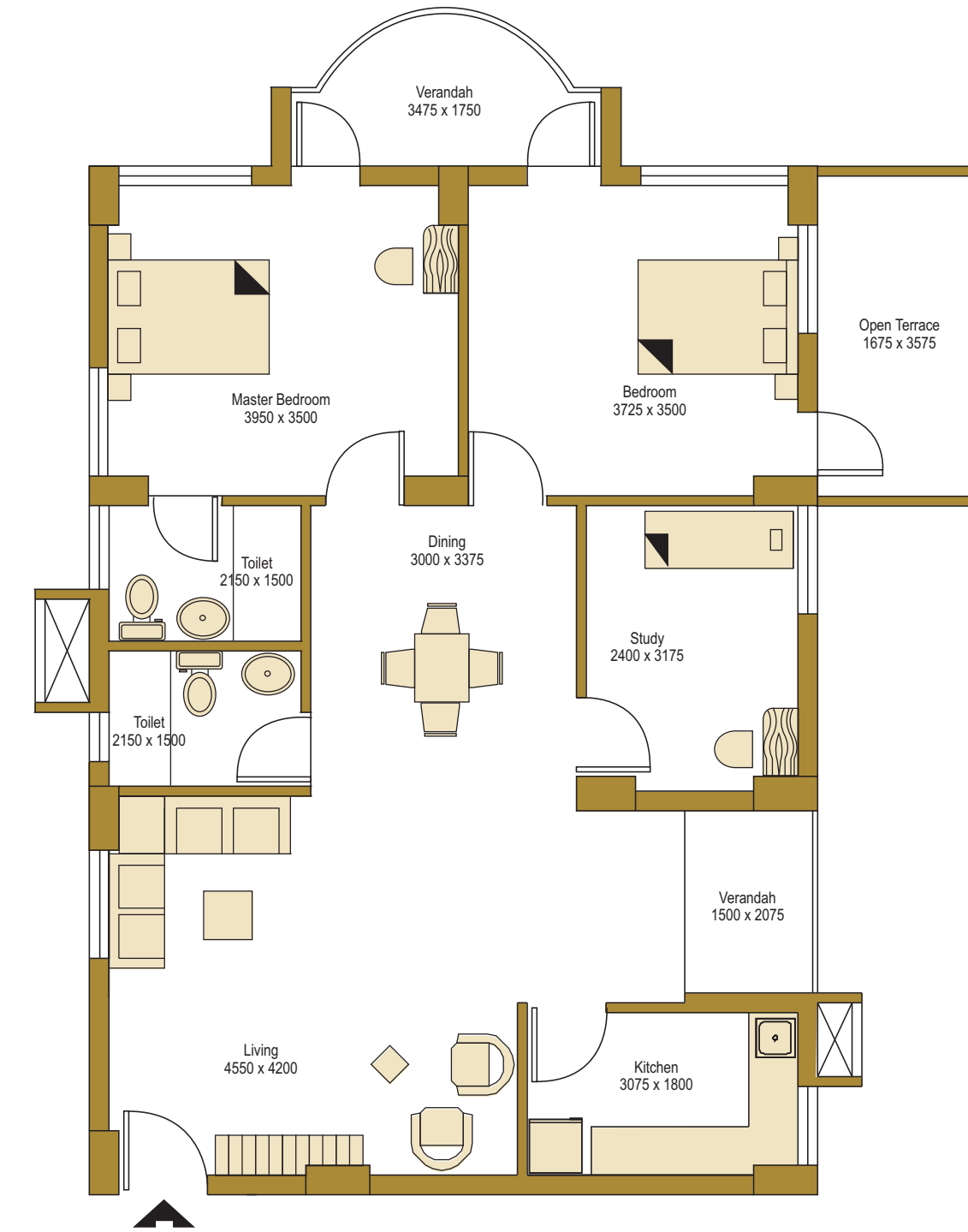
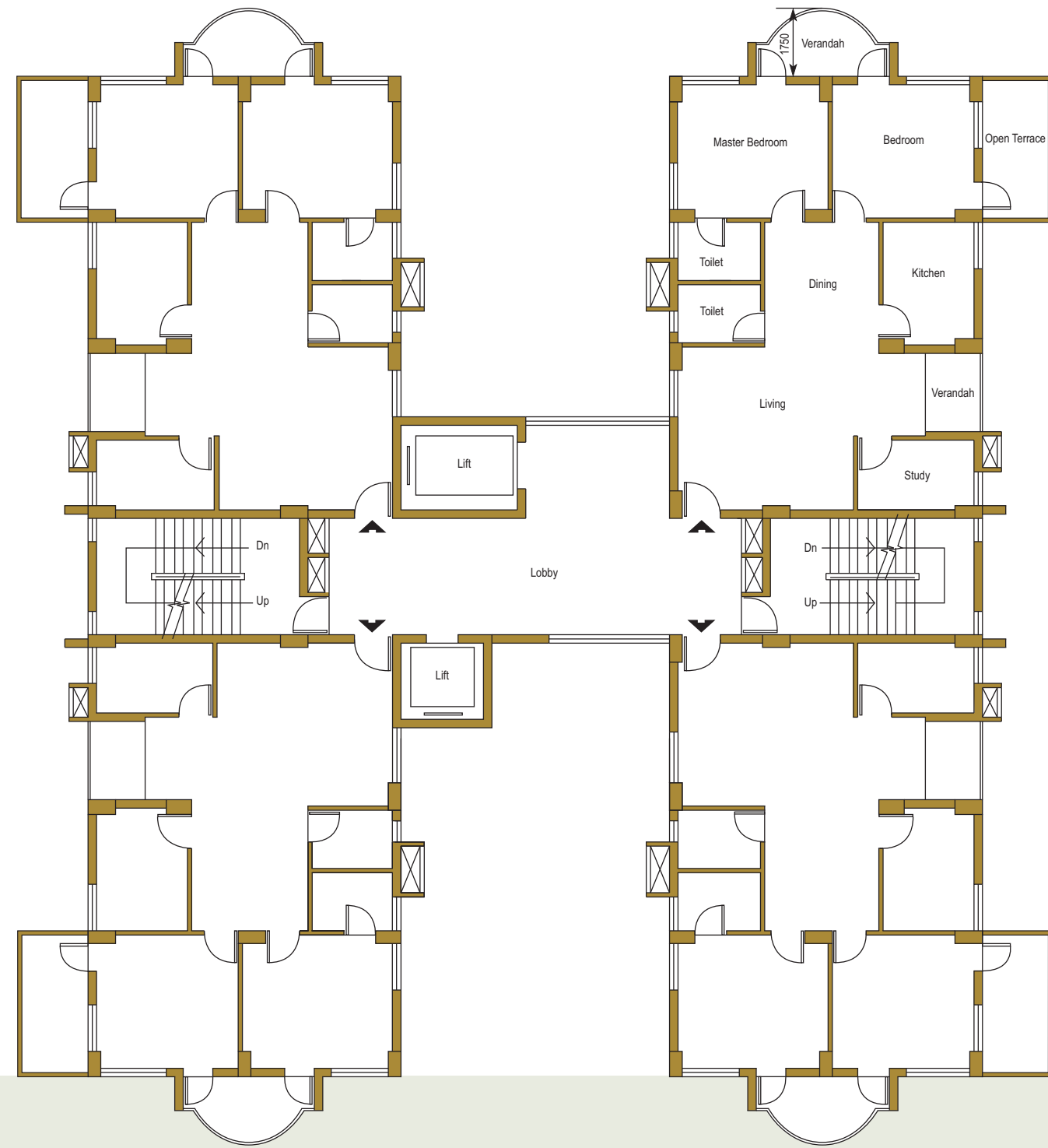


**Floor Plan of 1st floor with open terrace**  
 Area of Terrace 6.87 Sq. m. (74 Sq. ft.)

**1st Floor Flat**



**Flooring** : Master Bedroom - Laminated Wooden Flooring.  
 Others - Vitrified Tiles  
 Kitchen & Toilets - Ceramic Tiles

**Windows** : Glazed aluminium sliding/openable windows.

**Doors** : Verandah - Glazed Aluminium sliding door.  
 Entry & Other doors - Flush door with teak veneer.  
 Toilet - Laminate finished PVC door.

**Kitchen Counter** : Granite with Stainless Steel sink.

**Sanitaryware** : Hindware or Parryware (white).  
**CP Fixtures** : Jaquar Continental or equivalent.  
**Dado** : Ceramic Tiles.  
**Special Ammnities** : Geyser at two toilets